

**C-SERIES HYDRAULIC EXCAVATORS
CX235C SR**

CASE
CONSTRUCTION



**COMPACT
PERFORMANCE**

www.casece.com

**EXPERTS FOR THE REAL WORLD
SINCE 1842**

MAIN REASONS TO CHOOSE THE C-SERIES



HIGH EFFICIENCY

CASE Intelligent Hydraulic System (CIHS), in combination with the powerful TIER 4 Interim diesel engine, leads to fuel savings of up to 9% compared to the previous model



BEST IN CLASS PRECISION AND CONTROLLABILITY

A very smooth control to get the job done easily and in total safety



HIGH RELIABILITY

Robust design, high quality components and durable materials



GREAT VERSATILITY

- 3 available power modes to match customers needs (A, H, SP)
- Auto Power boost job-sensing hydraulic pressure increase





FULL SPECIFICATION EXCAVATORS

- Short Radius design, ideal for any jobsite where space is limited
- Wide offering of auxiliary hydraulics (multi-function and low flow)
- Undercarriage equipped with the blade as standard



PRO COVER PROTECTION PLAN 3 YEARS / 3,000 HOURS

ProCover is designed to help keep your equipment working well beyond the manufacturer's base warranty period while taking away the concerns of the cost and inconvenience of mechanical failure.



COMFORTABLE AND SAFE CAB

- Certified ROPS and FOPS level 2 cab
- Larger cab with multi-adjustable suspension seat and increased foot space
- Improved air conditioning system
- Wide glazed area for an outstanding visibility



FAST CYCLES

Pump Torque Variable Control provides perfect control of the engine and hydraulic system, further boosting productivity



SAFE OPERATION AND MAINTENANCE

- All filters grouped together for an easy and safe access from the ground
- Standard EMS bushing cut greasing intervals to every 1,000 hours

C-SERIES HYDRAULIC EXCAVATORS

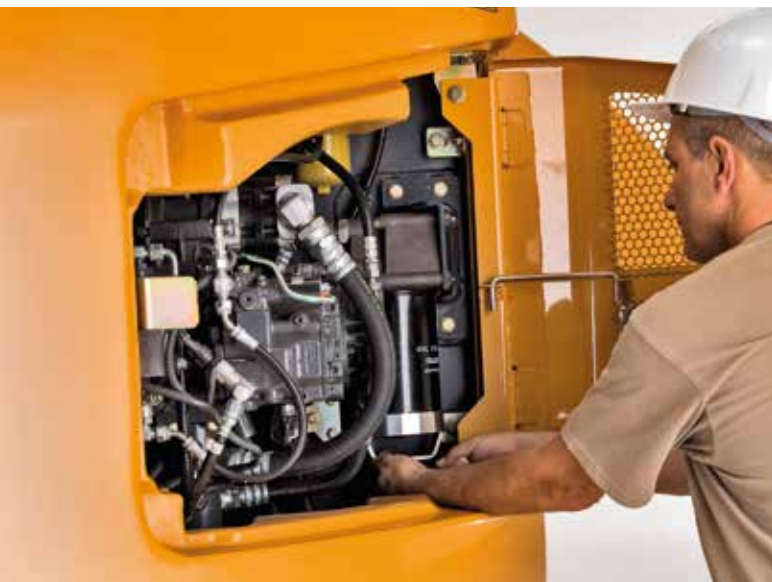


SHORT SWING RADIUS

The CX235C SR is the perfect machine for road construction, bridges projects and in urban construction sites, any jobsite where space is limited, without the risk of machines damage.

ROBUST QUALITY

The short radius machines continue a Case tradition of robust design and high quality build. By bringing together the highest quality components and materials, in a machine that has been designed to work productively, Case has further improved reliability and durability, reducing ownership costs and cutting downtime for the customer.



SIMPLIFIED MAINTENANCE

A redesigned upper structure provides access to all service points from ground level, with large side opening access doors. All filters are grouped together for easy access, reducing service time. A synthetic filter extends hydraulic oil service intervals to 5,000 hours while engine oil change intervals are set at a competitive 500 working hours. In addition remote greasing points and standard EMS bushings cut greasing intervals to every 1,000 hours. Side-by-side coolers and radiators are easily accessed for cleaning and maintenance.



PERFORMANCE AND EFFICIENCY

The Case Intelligent Hydraulic System (CIHS) incorporates a host of energy saving, performance enhancing functions, to boost efficiency and machine output. A simple operating mode dial delivers three working modes with Super Power set to provide maximum horsepower and hydraulic output. A Powerboost function provides an 8 second boost for maximum digging performance. 5 Energy saving functions allows to optimize performances reducing the fuel consumption depending on the working conditions.

OPERATOR COMFORT AND SAFETY

ROPS and FOPS Level 2 cab delivers an almost automotive noise level. Efficient air conditioning system, multi-adjustable suspension seating, increased foot space, cup holder and storage compartments deliver the most productive working environment possible. The new full-colour Multifunction Display provides access to on-board diagnostics, reducing downtime for service and maintenance. An ECO gauge provides a constant real-time recording of fuel consumption.



PRO COVER PROTECTION PLAN 3 YEARS / 3,000 HOURS

When the unexpected occurs, you need to know your equipment is protected.

We understand the importance of your machinery being in good working order and additionally to the STANDARD PROTECTION PLAN we offer you to purchase supplementary years/hours to meet your needs.





C-SERIES HYDRAULIC EXCAVATORS

ENGINE

Model _____ Tier 4 interim certified ISUZU AM-4HK1X
 Type _____ Water-cooled, 4-cycle diesel, 4-cylinder in line,
 High pressure common rail system (electric control), Turbocharger with air
 cooled intercooler, DPD system
 Number of cylinders _____ 4
 Bore/Stroke _____ 115 x 125 mm
 Horsepower ISO 9249 _____ 119.3 kW at 1800 min-1
 Maximum torque ISO 9249 _____ 621 Nm at 1500 min-1

HYDRAULIC SYSTEM

Max oil flow _____ 2 x 211 l/min @ 1800 min-1
 2 variable displacement axial piston pumps with regulating system
 Working circuit pressure _____
 Boom/Arm/Bucket _____ 343 Bar / 4974.8 PSI
 Boom/Arm/Bucket (with auto power up) _____ 364 Bar / 5179.4 PSI
 Swing circuit _____ 294 Bar / 4264.1 PSI
 Travel circuit _____ 343 Bar / 4974.8 PSI
 Auxiliary hydraulic flow and pressure for attachments _____ 343 Bar / 4974.8 PSI

SWING

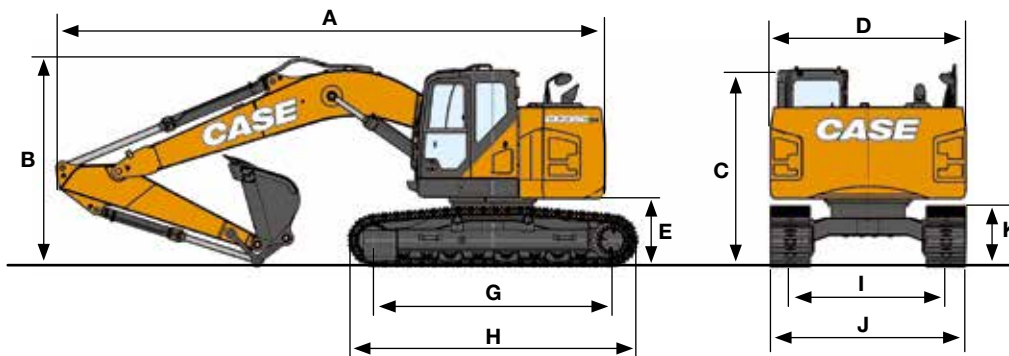
Maximum swing speed _____ 11.8 min-1

WEIGHT

With 2,94 m Arm, 0.8 m³ bucket, operator, lubricant,
 coolant and full fuel tank

CX235C SR LC	WEIGHT (KG)
600 mm grouser shoe	24,500

GENERAL DIMENSIONS



CX235C SR	LC ARM 2.94 M	BLADE ARM 2.94 M
Overall length (without attachment)	mm 4470	4700
A Overall length (with attachment)	mm 8830	9210
B Overall height (with attachment)	mm 3090	3090
C Cab height	mm 3140	3000
D Upper structure overall width	mm 2990	2990
Swing (rear end) radius	mm 1720	1720
E Clearance height under upper structure	mm 1020	1020
F Minimum ground clearance	mm 440	440
G Wheel base (Center to center of wheels)	mm 3660	3370
H Crawler overall length	mm 4470	4180
I Track gauge	mm 2390	2200
J Undercarriage overall width (with 500 mm shoes)	mm 2990	2800
K Crawler tracks height	mm 920	920

TRAVEL

Travel motor _____ Variable displacement axial piston motor
 Max travel speed _____ 5.0 km/h (Automatic travel speed shifting)
 Low travel speed _____ 3.2 km/h
 Gradeability _____ 70% (35°)
 Drawbar pull _____ 201 kN

ELECTRICAL SYSTEM

Circuit _____ 24 V
 Alternator _____ 50 Amp

UNDERCARRIAGE

	BLADE	LC
Number of carriers rollers (each side)	2	2
Number of track rollers (each side)	7	8
Number of shoes (each side)	46	49
Type of shoe	Triple grouser shoe	

CAPACITIES

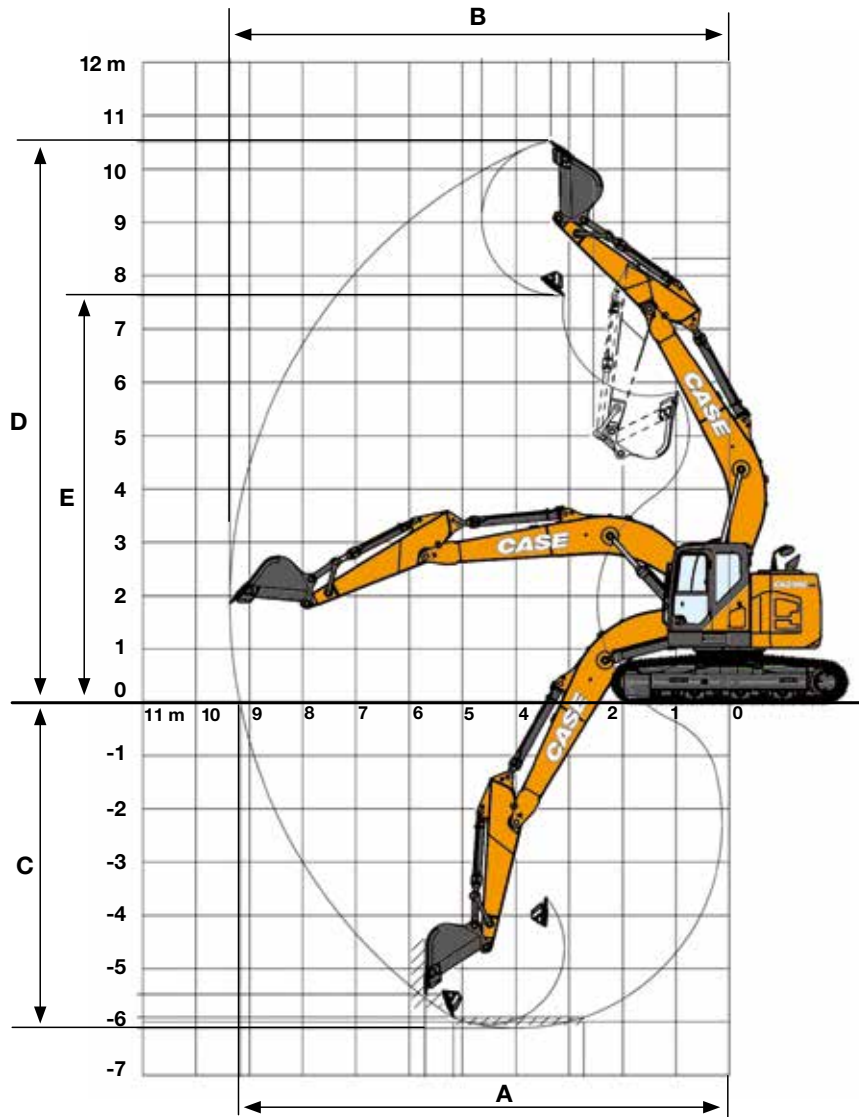
Fuel tank _____ 320 l
 Hydraulic system _____ 252 l
 Cooling system _____ 30.9 l
 Noise level inside cab _____ 73 dB(A)

With 2,94 m Arm, 0.8 m³ bucket, operator, lubricant,
 coolant and full fuel tank

CX235C SR BLADE	WEIGHT (kg)
600 mm grouser shoe	25,500

SPECIFICATIONS

CX235C SR



CX235C SR LC/CX235C SR BLADE

ARM 2.94

Boom length	mm	5700
Bucket radius	mm	1450
Bucket wrist action	°	177
A Maximum reach at GRP	mm	9670
B Maximum reach	mm	9850
C Max. digging depth	mm	6650
D Max. digging height	mm	10860
E Max. dumping height	mm	7970

DIGGING FORCE

With 0,80 m³ bucket (ISO 6015)

CX235 SR BLADE

ARM 2.94

Arm digging force	kN	103
- with auto power up	kN	110
Bucket digging force	kN	142
- with auto power up	kN	152

LIFTING CAPACITY

Front 360°	REACH													
	0 m		1.5 m		3.0 m		4.5 m		6.0 m		7.5 m		At max reach	

CX235C BLADE. Version Standard arm. 2.94 m arm length, 0.80 m³ bucket (645 kg), 600G shoes, max reach 9.85 m - Blade down

9.0 m							3090*	3090*					2470*	2470*	6.26
7.5 m							3950*	3950*	2960*	2960*			2180*	2180*	7.76
6.0 m							4330*	4330*	3980*	3430			2080*	2080*	8.69
4.5 m			5010*	5010*	5760*	5760*	4980*	4840	4520*	3320	3040*	2330	2080*	2080*	9.24
3.0 m			10520*	10520*	7780*	7240	5980*	4620	4990*	3170	4020*	2260	2150*	2020	9.49
1.5 m			9670*	9670*	9420*	6720	6840*	4330	5490*	3010	4430*	2180	2290*	1980	9.48
0 m	3840*	3840*	8630*	8630*	10260*	6290	7390*	4090	5780*	2880	3820*	2130	2530*	2040	9.22
-1.5 m	6980*	6980*	10790*	10790*	10310*	6150	7490*	3960	5780*	2820			2960*	2240	8.69
-3.0 m	9650*	9650*	14520*	12360	9890*	6220	7240*	4010	5410*	2900			3860*	2640	7.86
-4.5 m	14000*	14000*	12320*	12260*	8590*	6450	6140*	4250*					4950*	3470	6.70
-6.0 m					5310*	5310*							5090*	5090*	4.61

CX235C BLADE. Version Standard arm. 2.94 m arm length, 0.80 m³ bucket (645 kg), 600G shoes, max reach 9.85 m - Blade up

9.0 m							3090*	3090*					2470*	2470*	6.26
7.5 m							3950*	3950*	2960*	2960*			2180*	2180*	7.76
6.0 m							4330*	4330*	3980*	3270			2080*	2080*	8.69
4.5 m			5010*	5010*	5760*	5760*	4980*	4660	4520*	3160	3040*	2210	2080*	2080*	9.24
3.0 m			10520*	10520*	7780*	6970	5980*	4410	4670	3010	3400	2140	2150*	1910	9.49
1.5 m			9670*	9670*	9420*	6380	6470	4110	4510	2860	3320	2060	2290*	1870	9.48
0 m	3840*	3840*	8630*	8630*	9910	5950	6210	3870	4370	2730	3260	2010	2530*	1930	9.22
-1.5 m	6980*	6980*	10790*	10790*	9730	5810	6070	3750	4290	2660			2960*	2120	8.69
-3.0 m	9650*	9650*	14520*	11600	9740	5890	6110	3800	4380	2750			3860*	2500	7.86
-4.5 m	14000*	14000*	12320*	11700	8590*	6120	6140	4050					4950*	3290	6.70
-6.0 m					5310*	5310*							5090*	5090*	4.61

CX235C LC. Version Standard arm. 2.94 m arm length, 0.90 m³ bucket (684 kg), 600G shoes, max reach 9.51 m

9.0 m							2930*	2930*					2490*	2490*	6.17
7.5 m							3980*	3980*	2850*	2850*			2190*	2190*	7.71
6.0 m							4430*	4430*	4020*	3470			2090*	2090*	8.66
4.5 m			4990*	4990*	5680*	5680*	5000*	4900	4610*	3360	2980*	2380	2080*	2080*	9.22
3.0 m			10960*	10960*	7890*	7360	6050*	4660	5050*	3220	3800	2310	2150*	2080	9.49
1.5 m			8870*	8870*	9600*	6850	6940*	4390	5020	3070	3720	2240	2290*	2030	9.48
0 m			8500*	8500*	10440*	6470	6990	4180	4890	2950	3670	2190	2530*	2100	9.22
-1.5 m	7310*	7310*	10920*	10920*	10470*	6350	6870	4080	4840	2900			2950*	2310	8.69
-3.0 m	9960*	9960*	14670*	12860	10020*	6420	690	4120	4910*	2970			3720*	2740	7.85
-4.5 m	14280*	14280*	12330*	12330*	8610*	6630	6120*	4350					4940*	3670	6.58

* Hydraulic capacity 87%

STANDARD

ENGINE

Isuzu 4-cylinder turbodiesel in line
 Certified Tier 4 interim
 Electronic fuel injection
 High pressure common rail system
 Variable geometry turbo charger
 Cooled Exhaust Gas Recirculation (CEGR)
 Diesel Particulate Diffuser (DPD)
 Neutral safety start
 Auto-engine warm up, emergency stop
 Glow-plug pre-heat

Idle System:

Auto-idle
 One-touch idle
 Idle shut-down
 EPF (Engine Protection Feature)
 Dual-stage fuel filtration
 Dual element air filter
 Remote oil filter
 Green plug oil drain
 500-hour engine oil change interval
 Refuelling Pump
 (Diesel Oxidation Catalyst DOC +
 Diesel Particulate Filter DPF)

HYDRAULICS

Auto power boost
 Auto swing priority
 Auto travel speed change
 Selectable work modes
 Overload warning device
 SWC - SWING RELIEF CONTROL
 SSC - SPOOL STROKE CONTROL
 BEC - BOOM ECONOMY CONTROL
 AEC - AUTO ECONOMY CONTROL
 SEC - SWING ECONOMY CONTROL

ISO pattern controls
 Pre-set auxiliary pump settings
 Switch controlled auxiliary selection
 10 x auxiliary flow settings in memory
 Auxiliary valve
 Auxiliary pipe brackets
 5,000 hour hydraulic oil change interval
 1,000 hour hydraulic filter change interval
 Hydraulic track adjustment
 SAHR brake
 10 x auxiliary flow settings in memory

UPPERSTRUCTURE

Common key vandal locks
 Swivel guard belly pan
 Rear view safety camera
 4-point isolation mounted cab (fluid and spring)

ATTACHMENT

Bucket linkage with hook
 Boom mounted work light (70 watt)
 Auxiliary pipe brackets
 Centralized lube bank
 Attachment cushion valve
 Arm and boom regeneration
 Standard boom 5.70m
 Arm 2.40 m HD
 EMS bushings
 Safety valves on boom and arm cylinders with overload
 warning device

OPERATOR STATION

ROPS/FOPS level 2 cab
 Pressurized cab
 Tempered safety glass
 One-touch lock front window
 Sun visor & rain deflector
 AC/heat/defrost w/ auto climate control

Cup holder & ashtray
 Interior dome light
 Cloth covered air-suspension seat
 Seat-belt
 Adjustable armrests
 Low-effort controls (short)
 Radio mute switch on control lever
 Controls pre-wired for auxiliary
 Auxiliary select system
 Straight travel
 Aux-in port for personal electronics
 Multifunction color monitor
 Rear-view camera
 Anti-theft system (start code system)
 Rubber floor mat
 12-volt electric socket
 24-volt cigarette lighter
 One-piece right hand window
 2 internal & 3 external view mirrors
 2 working lights (boom & upperstructure)
 Beacon harness
 2 cab top working lights
 Windshield wiper / washer
 Clear (Lexan) roof window w/sunshade
 Storage compartments
 On-board diagnostic system
 Interior dome light (10W)
 Sliding cockpit (100 mm)
 Beacon hammess
UNDERCARRIAGE
 600 mm steel shoes, triple semigrouser strutted and
 sealed link
 Full overlap turntable bearing tub
 Single track guide

Standard equipment shown can vary by country.



CASE CONSTRUCTION EQUIPMENT
CONTACT INFORMATION
AUSTRALIA
31-53 Kurrajong Road
St Marys, NSW 2760

CASE Customer Assistance
1300 99 CASE

NOTE: CASE provides specific outfits for various countries and many optional fittings (OPT). The illustrations on this or other leaflets may relate to standard or optional fittings. Please consult your CASE dealer for any information in this regard and any possible updating on components. CNH Industrial reserves the right to modify machine specifications without incurring any obligation relating to such changes.

